



truscreen  
a world without  
cervical cancer

## NZX/ASX Announcement

29 October 2024

### TruScreen ranked in Top 6 global women's Health Startups 2024 report

- StartUs Insights, ranked TruScreen as a Top 6 Startup, as reported in October 2024 '6 Top Women's Health Startups Impacting Healthcare'.
- TruScreen was ranked in the Top 6 picks from a cohort of 580 global women's healthcare companies evaluated by the StartUs Insights analysts.

StartUs Insights, an Austrian based data science company released its report titled '6 Top Women's Health Startups Impacting Healthcare'. StartUs Insights used AI analytics to evaluate 580 global women's healthcare companies, ranking TruScreen in its Top 6 Picks.

The report can be found at the link below:

<https://www.startus-insights.com/innovators-guide/6-top-womens-health-startups-impacting-healthcare/>

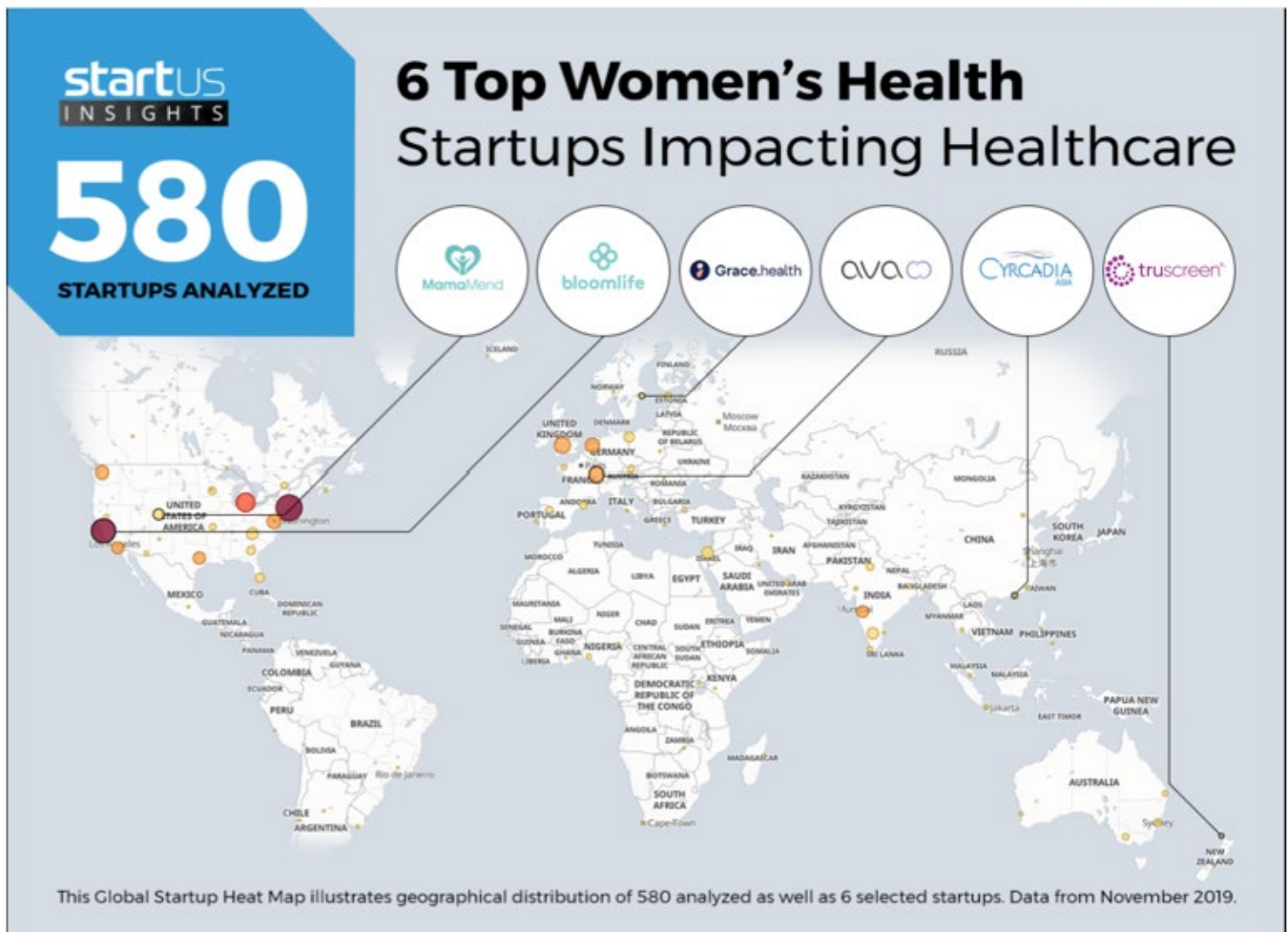
The report commented that "Cervical cancer is a major cause of female mortality worldwide, with a bigger death toll in the populations that lack screening programs. Screening methods that don't require lab facilities for cervical cancer diagnostics can solve the accessibility challenges in developing countries as they are an alternative to traditional Pap smear tests.

[TruScreen](https://truscreen.com/product/clinical-performance/), based in New Zealand, develops a screening device that detects precancerous changes through optical and electrical measurements of cervical tissue. In a number of studies, <https://truscreen.com/product/clinical-performance/>, TruScreen proved to be of equal sensitivity compared to Pap tests. TruScreen can be effectively used with minimal training of medical or paramedical staff and doesn't require the infrastructure and resource costs associated with cytology-based screening."

TruScreen CEO Martin Dillon said "*The ranking of TruScreen as a global top six women's healthcare company is a testament of TruScreen's technology to lower the high global mortality rate of women from Cervical Cancer. TruScreen is pleased to be recognised as a scaled up startup company with technology data sets that are robust and supported with global clinical trials. And that our technology ranks above 574 other global women's healthcare companies evaluated in 2024 for this report*".



truscreen  
a world without  
cervical cancer



This announcement has been approved by the Board.

Ends

For more information, visit [www.truscreen.com](http://www.truscreen.com) or contact:

Martin Dillon

Chief Executive Officer

[martindillon@truscreen.com](mailto:martindillon@truscreen.com)

Guy Robertson

Chief Financial Officer

[guyrobertson@truscreen.com](mailto:guyrobertson@truscreen.com)



truscreen  
a world without  
cervical cancer

## About TruScreen:

TruScreen Group Limited (NZX/ASX: TRU) is a medical device company that has developed and manufactures an AI-enabled device for detecting abnormalities in the cervical tissue in real-time via measurements of the low level of optical and electrical stimuli.

TruScreen's cervical screening technology enables cervical screening, negating sampling and processing of biological tissues, failed samples, missed follow-up, discomfort, and the need for costly, specialised personnel and supporting laboratory infrastructure.

The TruScreen device, TruScreen Ultra<sup>®</sup>, is registered as a primary screening device for cervical cancer screening.

The device is CE Marked/EC certified, ISO 13485 compliant and is registered for clinical use with the TGA (Australia), MHRA (UK), NMPA (China), SFDA (Saudi Arabia), Roszdravnadzor (Russia), and COFEPRIS (Mexico). It has Ministry of Health approval for use in Vietnam, Israel, Ukraine, and the Philippines, among others and has distributors in 29 countries. In 2021, TruScreen established a manufacturing facility in China for devices marketed and sold in China.

TruScreen technology has been recognised in CSCCP's (Chinese Society for Colposcopy and Cervical Pathology) China Cervical Cancer Screening Management Guideline.

TruScreen has been recognised in a China Blue Paper "Cervical Cancer Three Stage Standardized Prevent and Treatment" published on 28 April 2023.

In Dec 2023 TruScreen technology was added to the Vietnam Ministry of Health approved National Technical List, for use in Vietnam's public and private healthcare sectors

In financial year 2024 alone, over 200,000\* examinations have been performed with TruScreen device. To date, over 200 devices have been installed and used in China, Vietnam, Mexico, Zimbabwe, Russia, and Saudi Arabia. TruScreen's vision is "A world without the cervical cancer"<sup>®</sup>.

To learn more, please visit: [www.truscreen.com/](http://www.truscreen.com/).

*\*Based on Single Use Sensor sales.*

## About StartUs Insights:

StartUs Insights is a data-science company on the mission to map the world's information on innovation, emerging companies, and technologies. We achieve this through the StartUs Insights Discovery Platform, covering over 1.3 million startups & scaleups globally. Our Big Data & AI-powered innovation intelligence enables you to quickly and continuously identify new startups, scaleups & technologies

To learn more, please visit: [www.startus-insights.com/](http://www.startus-insights.com/)

Glossary:

**Pap smear** (the Papanicolaou smear) test involves gathering a sample of cells from the cervix, with a special brush. The sample is placed on a glass slide or in a bottle containing a solution to preserve the cells. Then it is sent to a laboratory for a pathologist to examine under a microscope. <https://www.cancer.net/navigating-cancer-care/diagnosing-cancer/tests-and-procedures/pap-test>

**LBC** (the liquid-based cytology) test, transfers a thin layer of cells, collected with a brush from the cervix, onto a slide after removing blood or mucus from the sample. The sample is preserved so other tests can be done at the same time, such as the human papillomavirus (HPV) test <https://www.cancer.net/cancer-types/cervical-cancer/diagnosis>

**HPV (human papilloma virus) test** is done on a sample of cells removed from the cervix, the same sample used for the Pap test or LBC. This sample is tested for the strains of HPV most commonly linked to cervical cancer. HPV testing may be done by itself or combined with a Pap test and/or LBC. This test may also be done on a sample of cells which a person can collect on their own. <https://www.cancer.net/cancer-types/cervical-cancer/screening-and-prevention>

**Sensitivity and specificity** mathematically describe the accuracy of a test which reports the presence or absence of a condition. If individuals who have the condition are considered "positive" and those who don't are considered "negative", then sensitivity is a measure of how well a test can identify true positives and specificity is a measure of how well a test can identify true negatives:

- **Sensitivity** (true positive rate) is the probability of a positive test result, [conditioned](#) on the individual truly being positive.
- **Specificity** (true negative rate) is the probability of a negative test result, conditioned on the individual truly being negative ([Sensitivity and specificity – Wikipedia](#)).

For more information about the cervical cancer and cervical cancer screening in New Zealand and Australia, please see useful links:

New Zealand: [National Cervical Screening Programme | National Screening Unit \(nsu.govt.nz\)](#)

Australia: [Cervical cancer | Causes, Symptoms & Treatments | Cancer Council](#)