



Annual Meeting of Shareholders

17 October 2024

Chair Delivery





Board of Directors

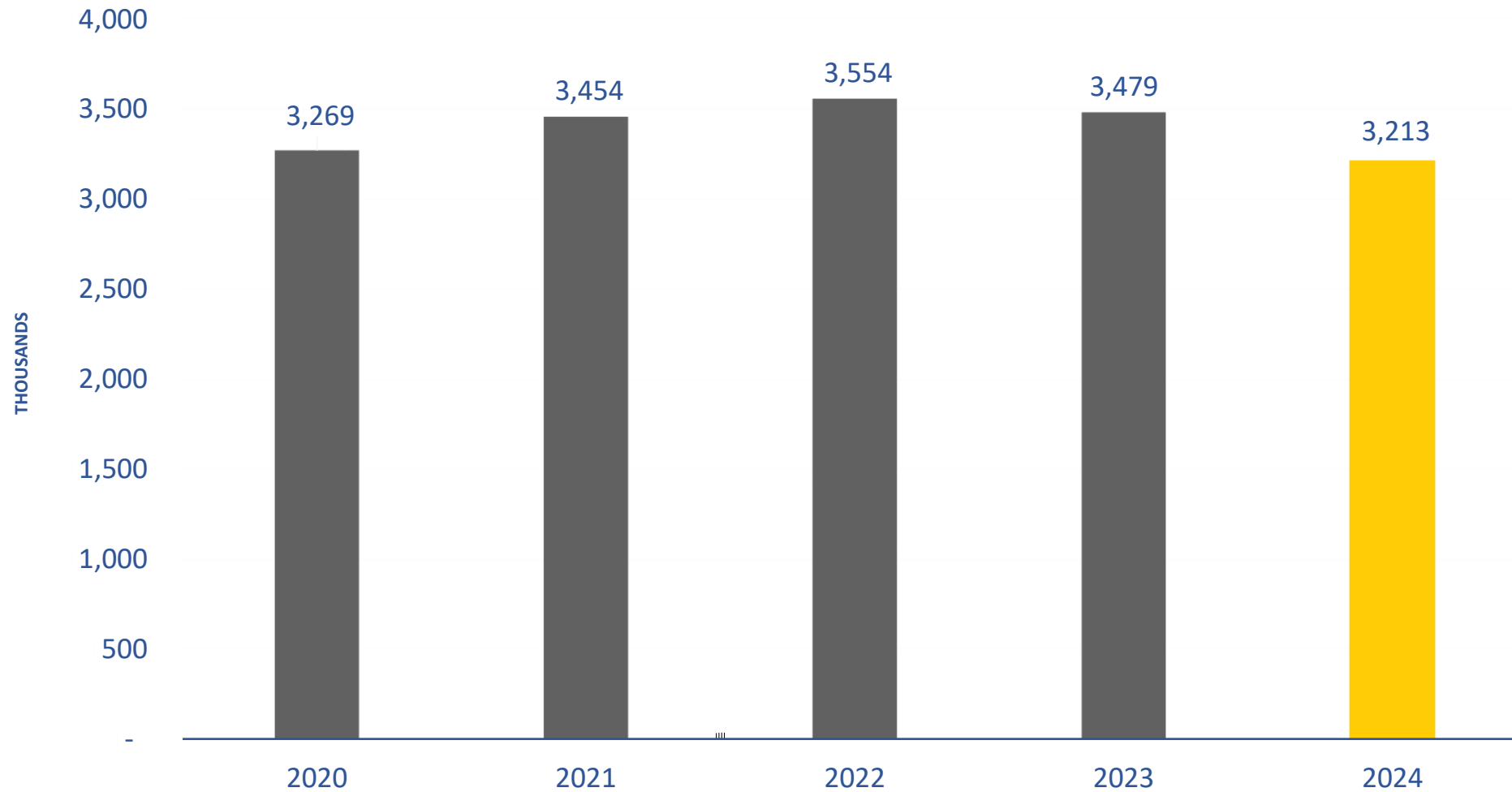
Leadership Team





Cargo Volumes decreased by 7.7%

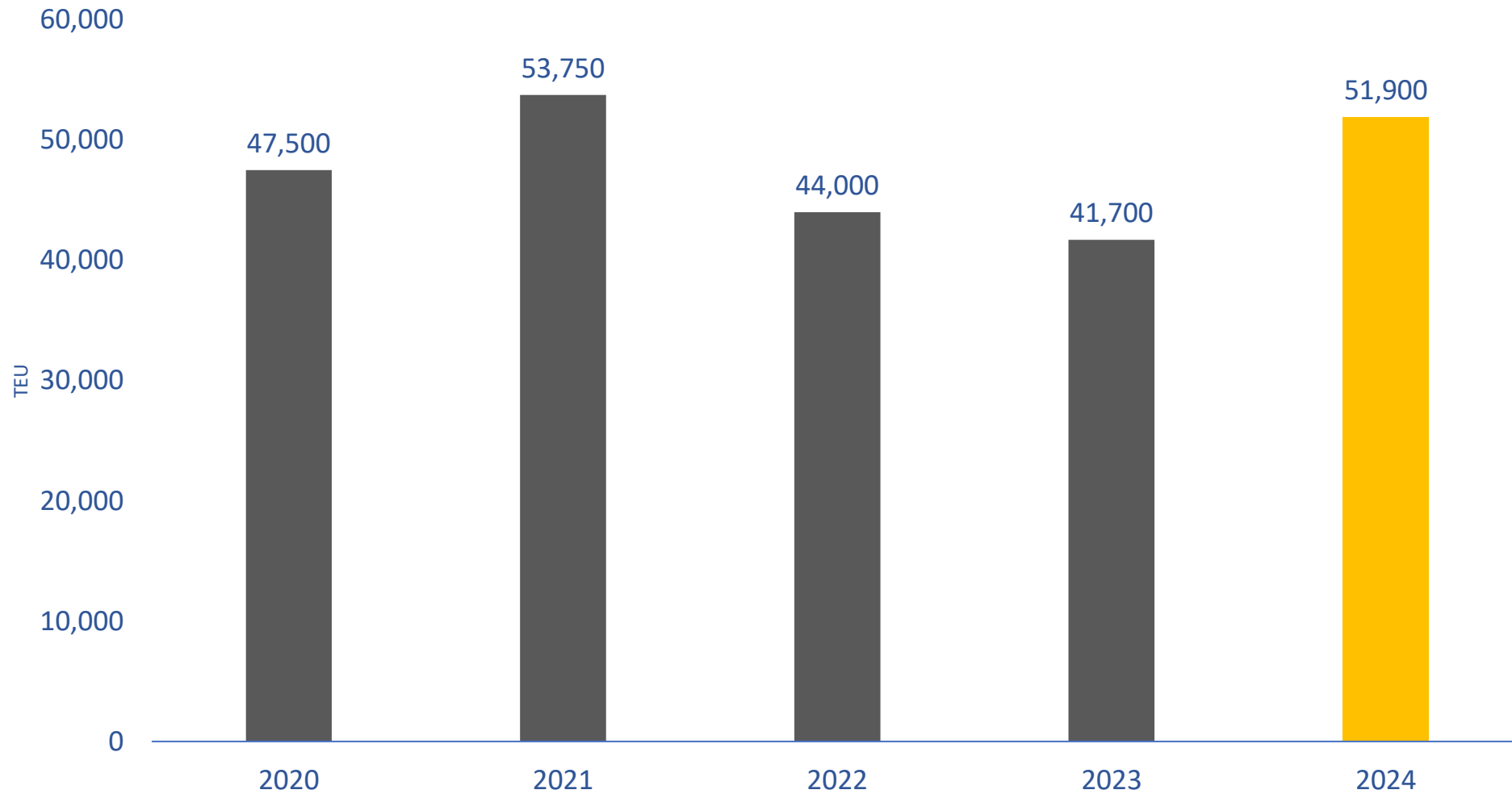
For the year ended 30 June 2024





Container Volumes increased by 24.5%

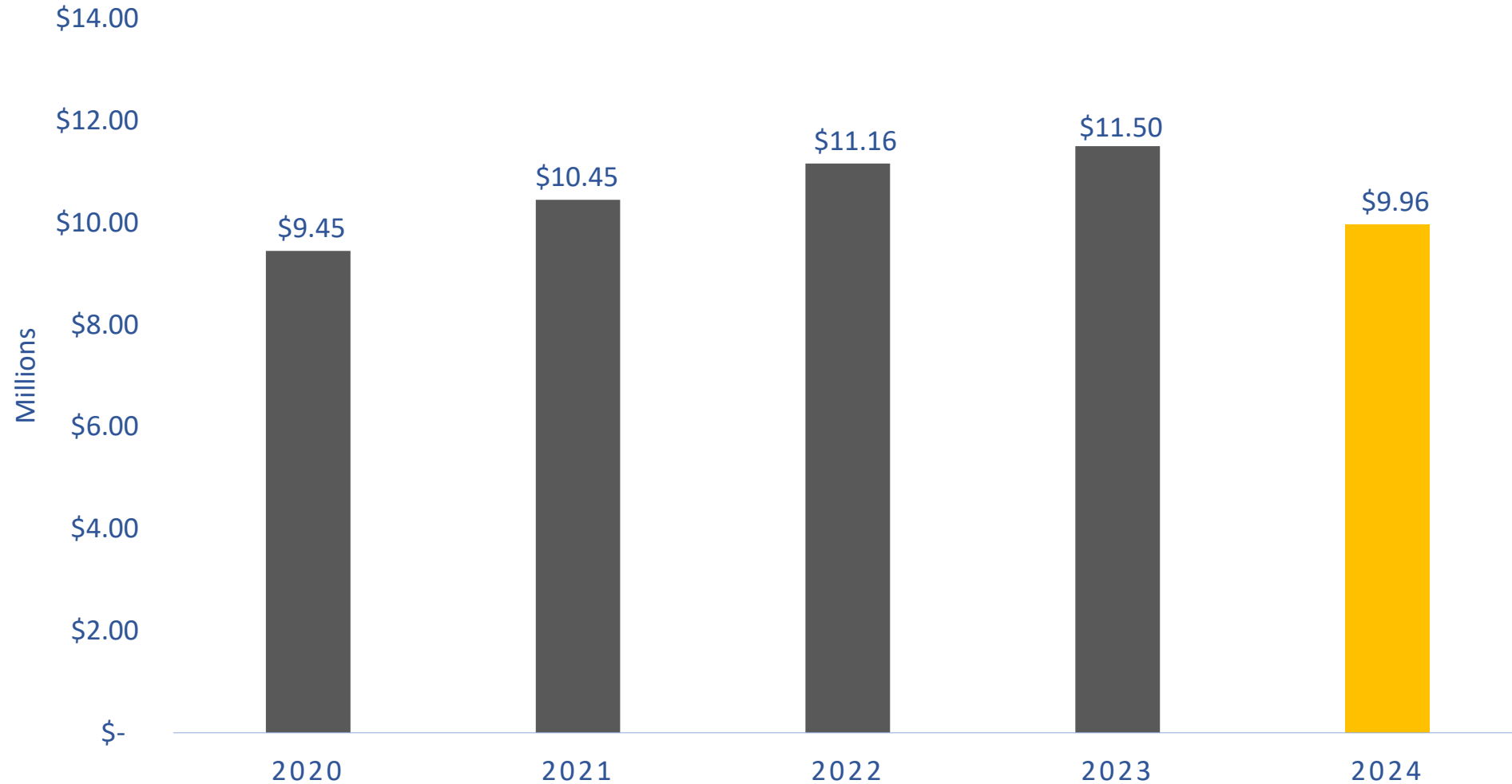
For the year ended 30 June 2024





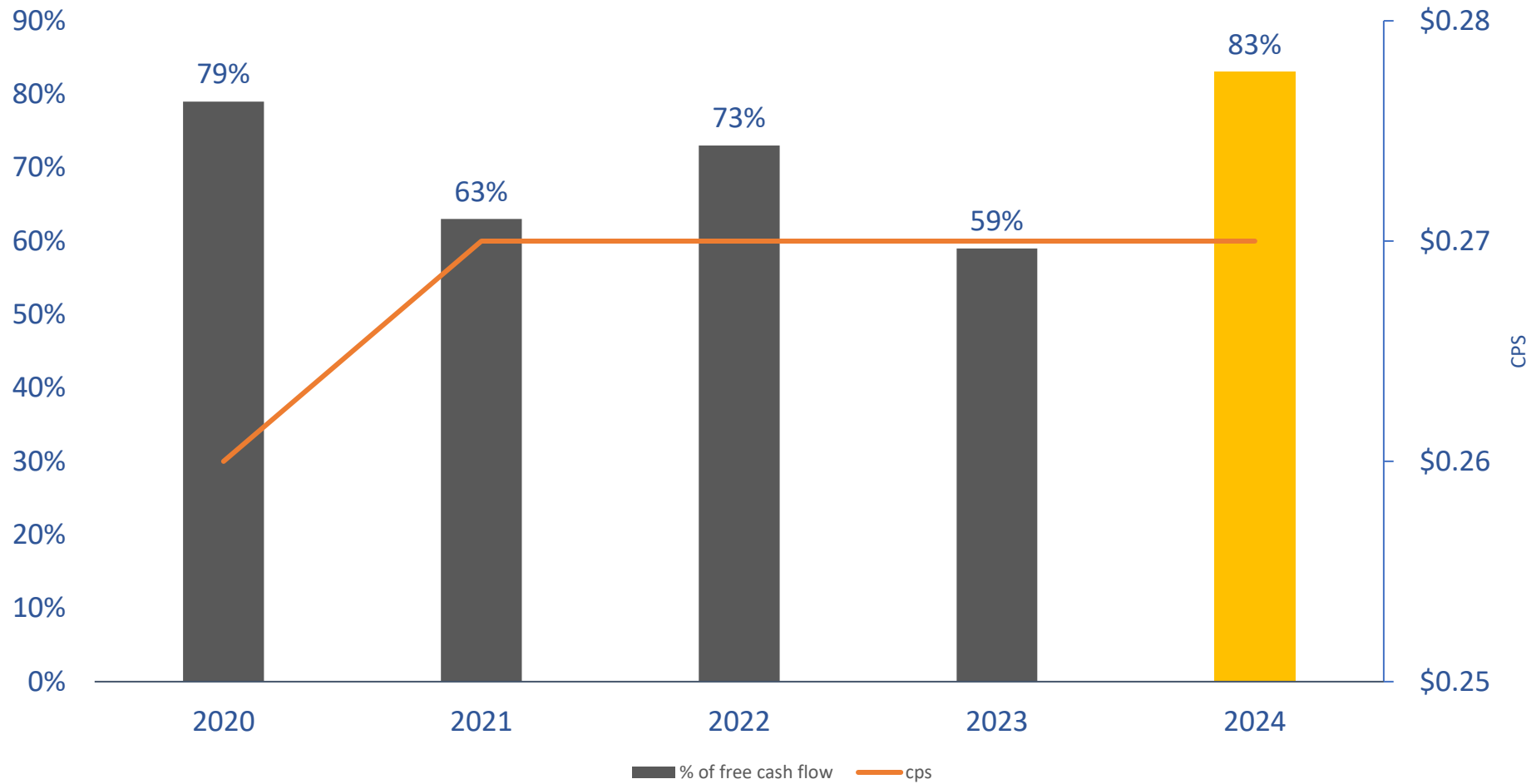
Normalised Net Profit after Tax decreased by 13.4%

For the year ended 30 June 2024



Dividend

For the year ended 30 June 2024





Declared draft of 9.7m Chart Datum
or 10.7m High Tide.

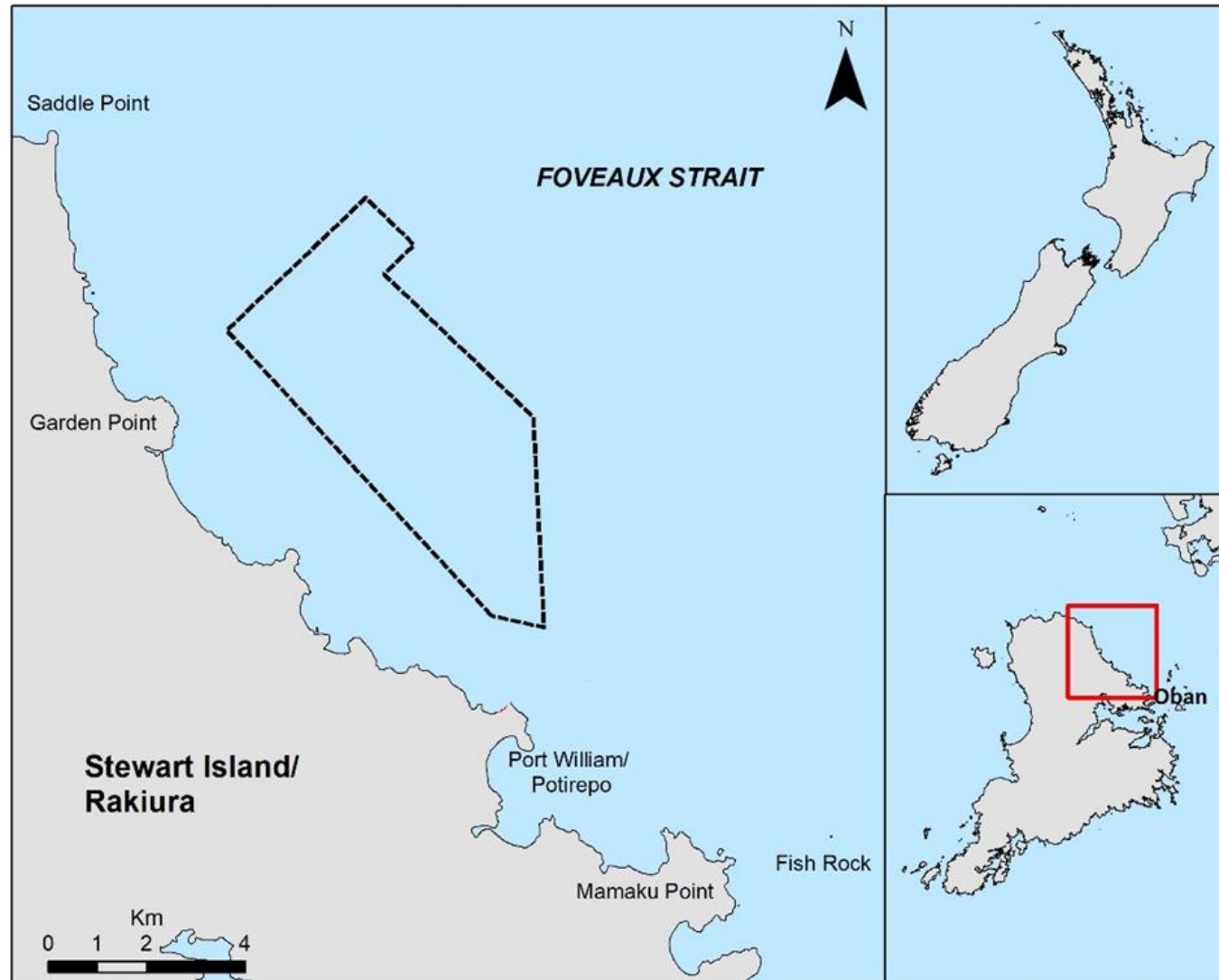


NZAS 20 Year Extension

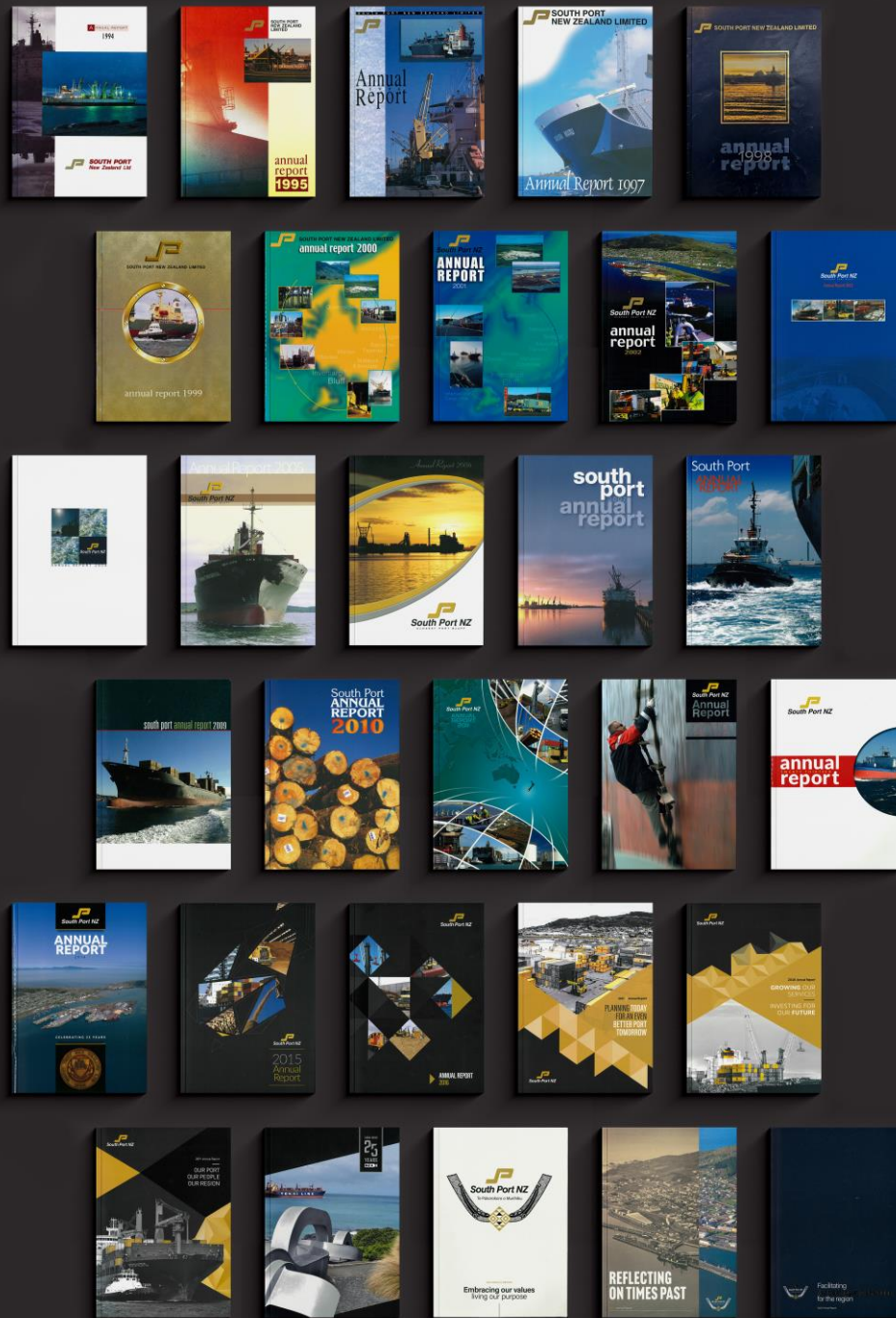


Kaiwera Downs Stage 2

Fast Track Consents – Hananui Aquaculture Farm



30 Years Listed on NZX

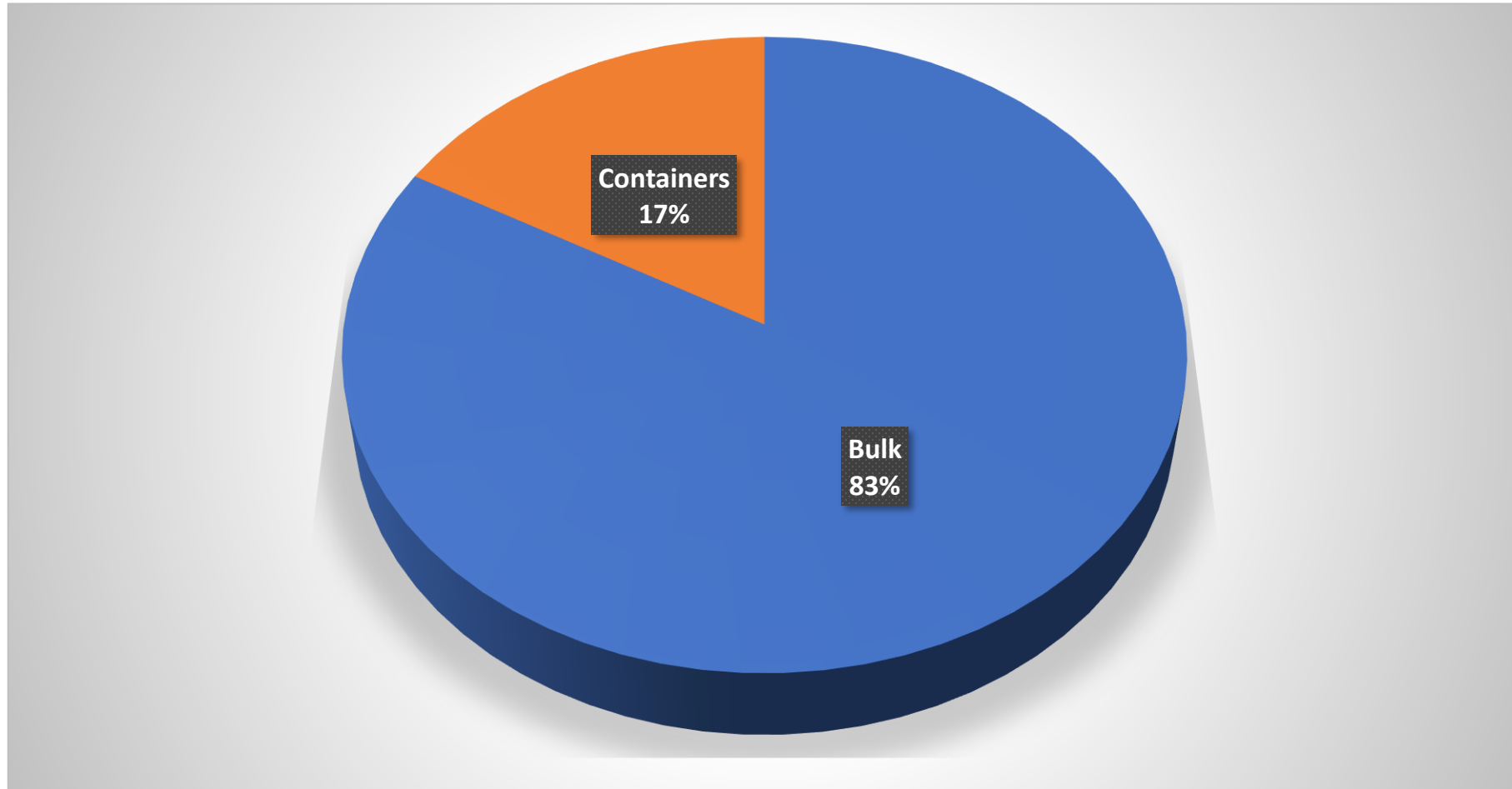


CEO Delivery



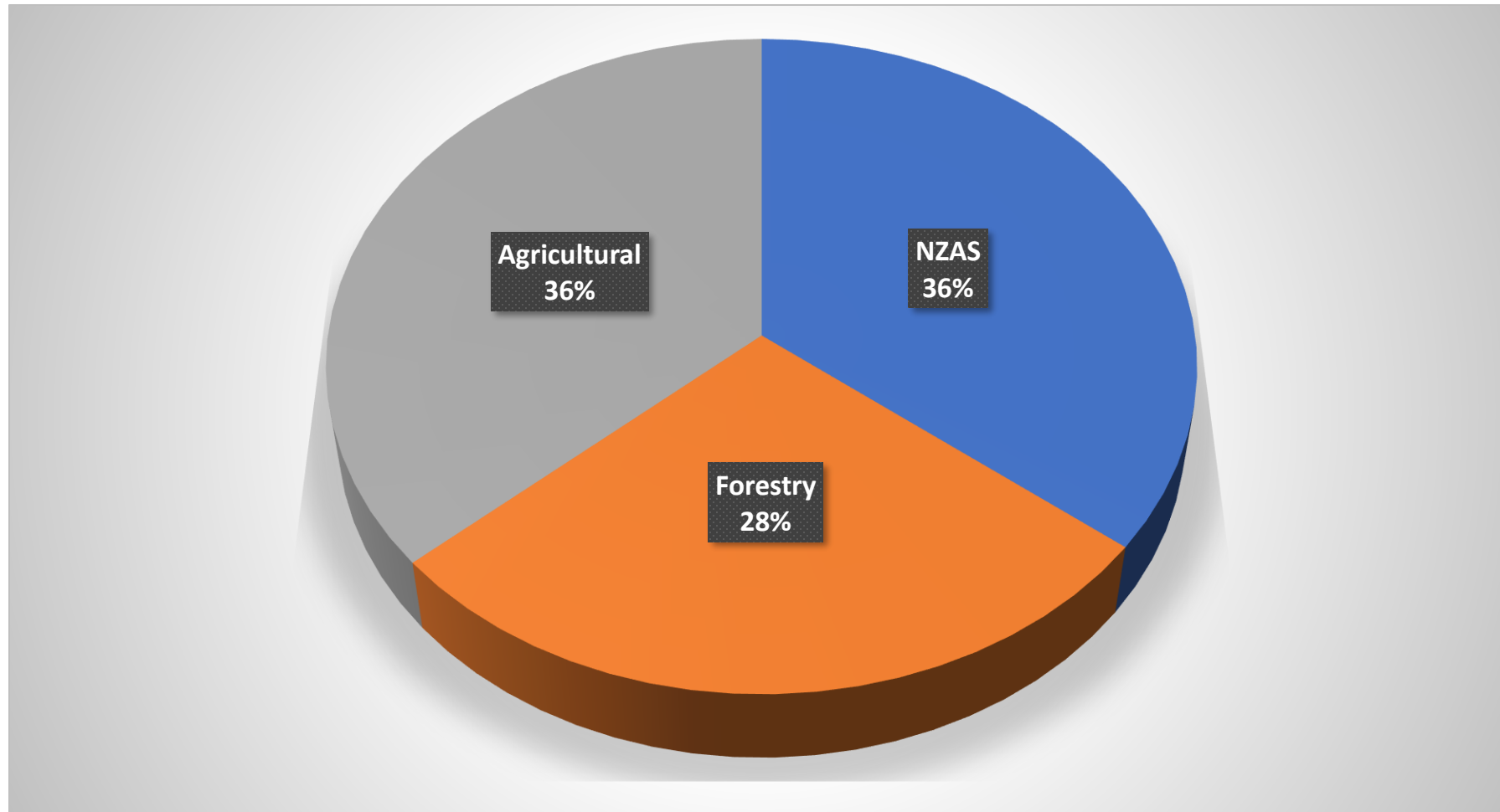
Cargo Profile

For the year ended 30 June 2024

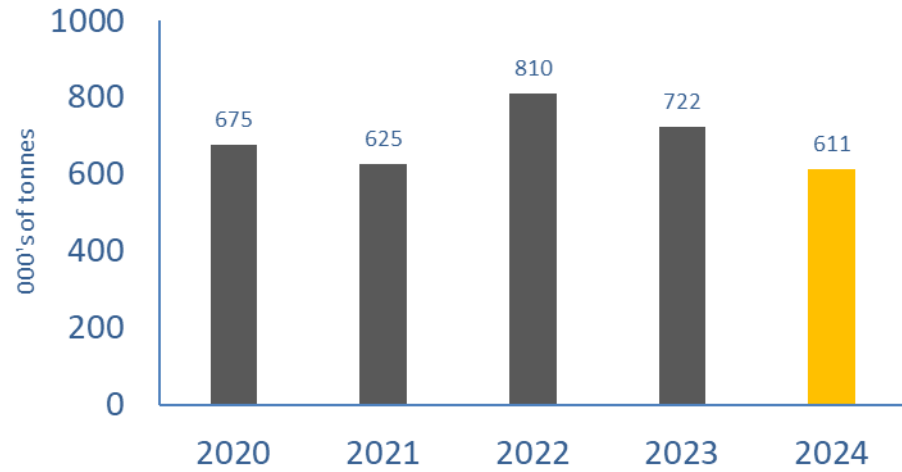


Cargo Profile

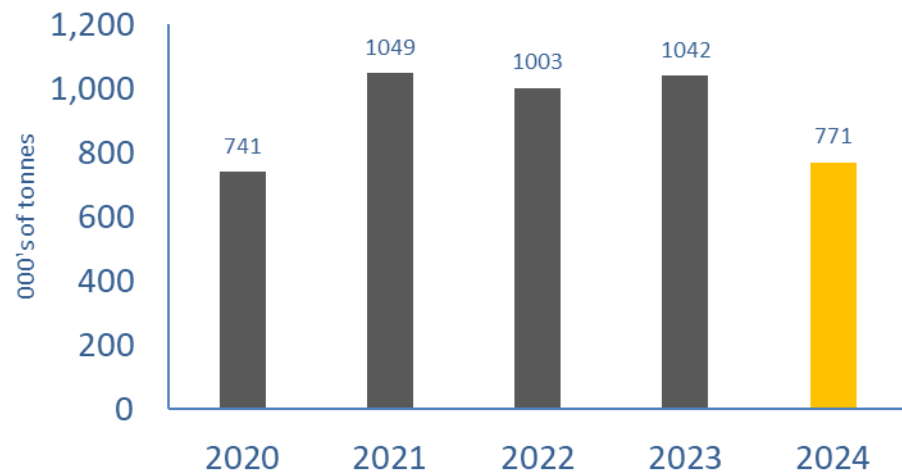
For the year ended 30 June 2024



Agricultural Inputs decreased by 15%

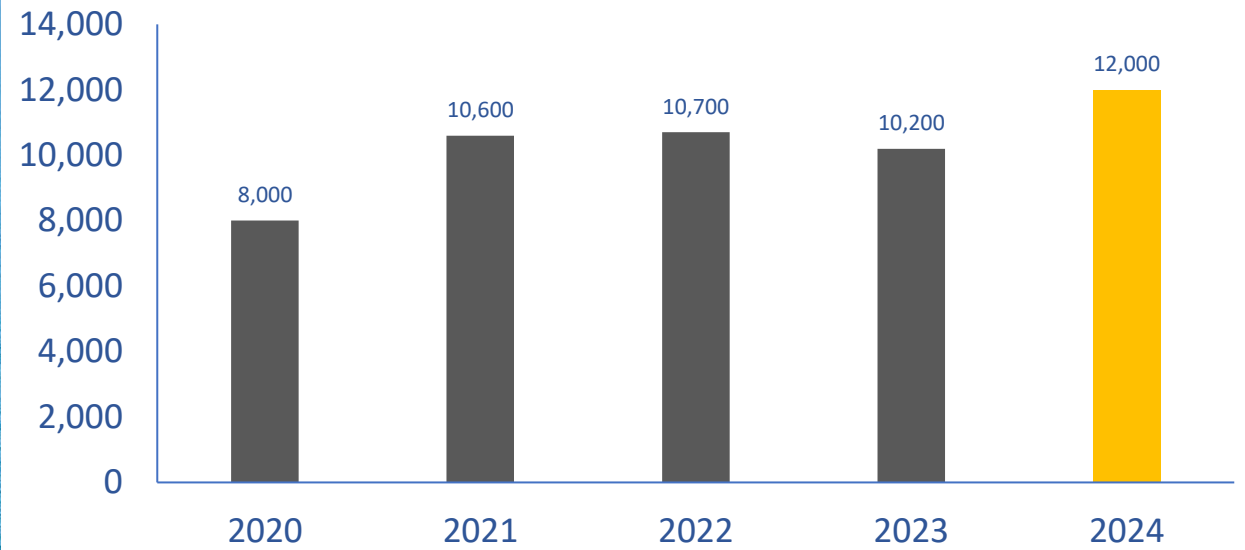


Forestry Exports decreased by 26%

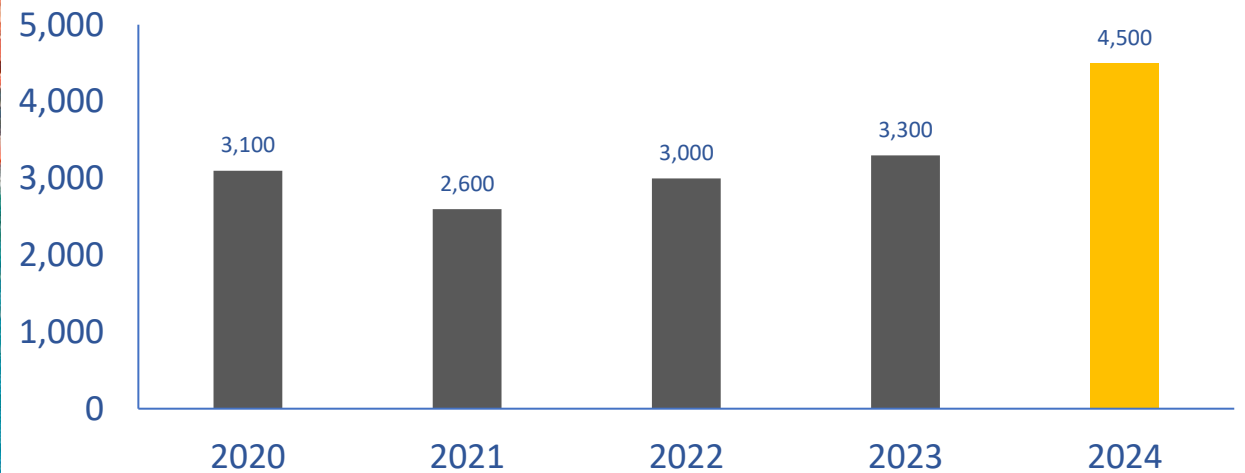




Agricultural Export Volumes increased by 18%



Manufactured Export Goods increased by 35%



Mediterranean Shipping Company



Health & Safety





Approved Code of Practice



Climate Related Disclosures



Community

Staff



Outlook





Questions