

Release

Stock Exchange Listings NZX (MEL) ASX (MEZ)

Meridian Energy monthly operating report for June 2022

15 July 2022

Attached is Meridian Energy Limited's monthly operating report for the month of June 2022.

Highlights this month include:

- In the month to 14 July 2022, national hydro storage increased from **85%** to **94%** of historical average
- South Island storage increased to **84%** of average and North Island storage increased to **146%** of average by 14 July 2022
- Meridian's June 2022 monthly total inflows were **144%** of historical average
- Meridian's Waitaki catchment water storage at the end of June 2022 was **78%** of historical average
- Water storage in Meridian's Waiau catchment was **119%** of average at the end of June 2022
- National electricity demand in June 2022 was **0.2%** higher than the same month last year
- June was a warm month with temperatures above average for nearly all the country. Rainfall was above average in western and inland areas, with eastern areas drier than average
- New Zealand Aluminium Smelter's average load during June 2022 was **575MW**
- Meridian's New Zealand retail sales volumes in June 2022 were **6.5%** higher than June 2021
- Compared to June 2021, segment sales increased in residential +6.2%, small medium business +6.5%, agricultural +9.9%, large business +13.4% and corporate +5.2%

Highlights for the fourth quarter include:

- Meridian's Q4 total inflows were **95%** of historical average, **18%** lower than Q4 last year
- Meridian's Waitaki catchment water storage at the end of Q4 was **5%** lower than Q4 last year
- Compared to Q4 last year, Meridian's New Zealand generation was **5.1%** higher at a **29.8%** lower average price
- Q4 saw decreases in near-term futures prices and increases in longer dated futures prices
- New Zealand Aluminium Smelter's sales volume in Q4 was **1.5%** lower than Q4 last year

- National electricity demand in Q4 was **1.7%** lower than Q4 last year
- 2022 autumn (Mar-May) was the equal **2nd** warmest on record. The north and east of the North Island recorded above average rainfall, while the rest of country experienced below average rainfall
- At the end of Q4, Meridian's New Zealand customer numbers were **5.3%** higher than the same time last year
- Compared to Q4 last year, Meridian's NZ retail sales volumes were **4.6%** higher at a **6.0%** higher average price
- Sales increased in most segments, agricultural volumes were lower
- Compared to Q4 last year, total operating costs were **1.8%** higher
- Compared to Q4 last year, total capital expenditure was **159.0%** higher
- Stay in business capital expenditure was **13.5%** higher. Growth capital expenditure was **324.3%** higher, reflecting construction of the Harapaki wind farm

ENDS

Neal Barclay
Chief Executive
Meridian Energy Limited

For investor relations queries, please contact:

Owen Hackston
Investor Relations Manager
021 246 4772

For media queries, please contact:

Rheilli Uluilalata
External Communications Advisor
022 589 1052



Meridian.

Monthly Operating Report

June 2022

June highlights

In the month to 14 July 2022, national hydro storage increased from **85%** to **94%** of historical average

South Island storage increased to **84%** of average and North Island storage increased to **146%** of average by 14 July 2022

Meridian's June 2022 monthly total inflows were **144%** of historical average

Meridian's Waitaki catchment water storage at the end of June 2022 was **78%** of historical average

Water storage in Meridian's Waiau catchment was **119%** of average at the end of June 2022

National electricity demand in June 2022 was **0.2%** higher than the same month last year

June was a warm month with temperatures above average for nearly all the country. Rainfall was above average in western and inland areas, with eastern areas drier than average

New Zealand Aluminium Smelter's average load during June 2022 was **575MW**

Meridian's New Zealand retail sales volumes in June 2022 were **6.5%** higher than June 2021

Compared to June 2021, segment sales increased in residential +6.2%, small medium business +6.5%, agricultural +9.9%, large business +13.4% and corporate +5.2%

Q4 highlights

Meridian's Q4 total inflows were **95%** of historical average, **18%** lower than Q4 last year

Meridian's Waitaki catchment water storage at the end of Q4 was **5%** lower than Q4 last year

Compared to Q4 last year, Meridian's New Zealand generation was **5.1%** higher at a **29.8%** lower average price

Q4 saw decreases in near-term futures prices and increases in longer dated futures prices

New Zealand Aluminium Smelter's sales volume in Q4 was **1.5%** lower than Q4 last year

National electricity demand in Q4 was **1.7%** lower than Q4 last year

2022 autumn (Mar-May) was the equal **2nd** warmest on record. The north and east of the North Island recorded above average rainfall, while the rest of country experienced below average rainfall

At the end of Q4, Meridian's New Zealand customer numbers were **5.3%** higher than the same time last year

Compared to Q4 last year, Meridian's NZ retail sales volumes were **4.6%** higher at a **6.0%** higher average price

Sales increased in most segments, agricultural volumes were lower

Compared to Q4 last year, total operating costs were **1.8%** higher

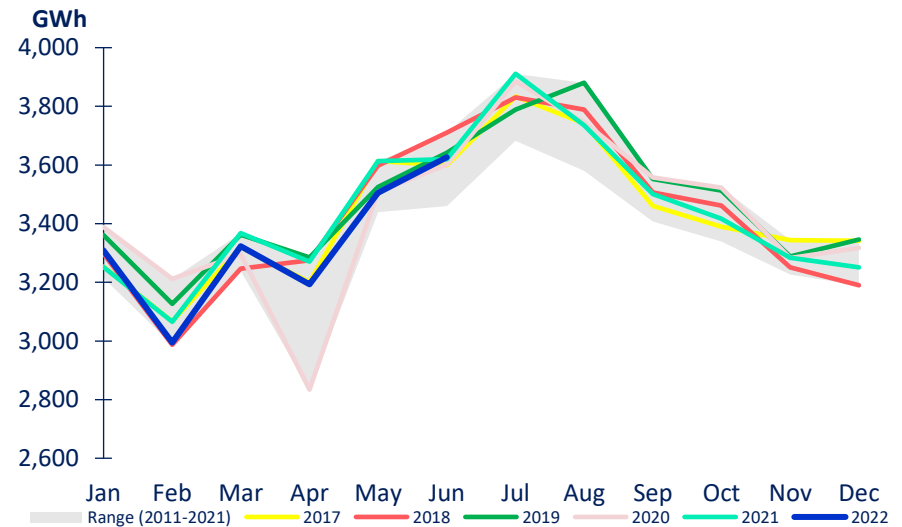
Compared to Q4 last year, total capital expenditure was **159.0%** higher

Stay in business capital expenditure was **13.5%** higher. Growth capital expenditure was **324.3%** higher, reflecting construction of the Harapaki wind farm

Market data

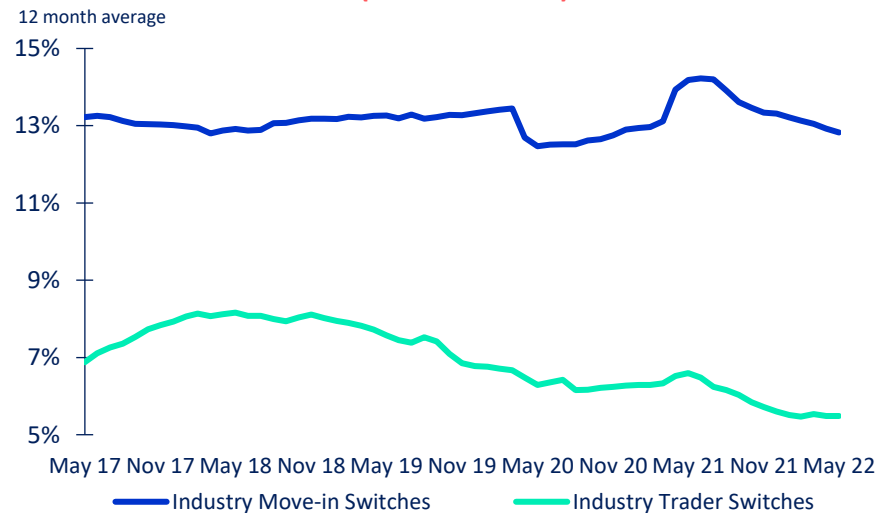
- National electricity demand in June 2022 was 0.2% higher than the same month last year
- June was a warm month with temperatures above average for nearly all the country. Rainfall was above average in western and inland areas, with eastern areas drier than average
- Demand in the last 12 months was 1.1% lower than the preceding 12 months
- New Zealand Aluminium Smelter's average load during June 2022 was 575MW
- 12-month average switching rate of customers changing retailers but not moving ("trader" switch) was 5.5% at the end of May 2022
- 12-month average switching rate of customers moving and changing retailers ("move-in" switch) was 12.8% at the end of May 2022

NATIONAL DEMAND



Source: Electricity Authority (reconciled demand)

MARKET ICP SWITCHING (ALL RETAILERS)

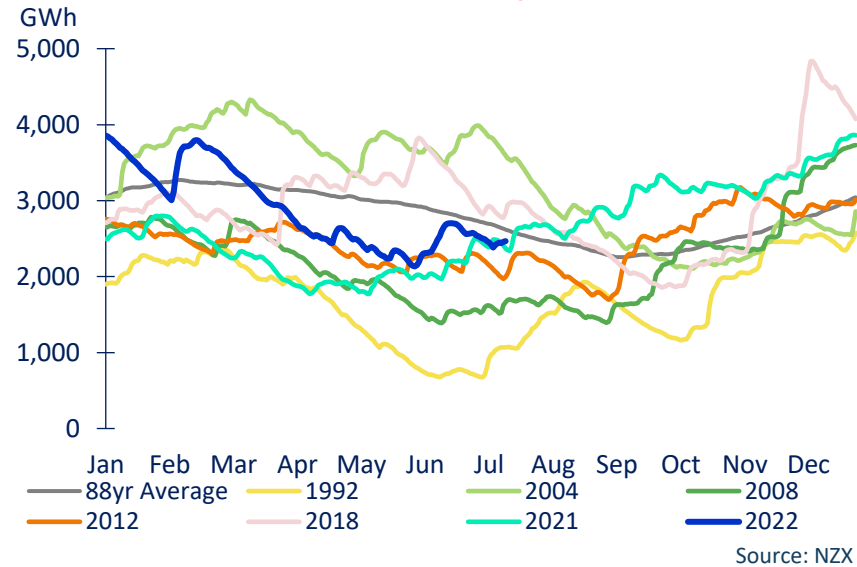


Source: Electricity Authority

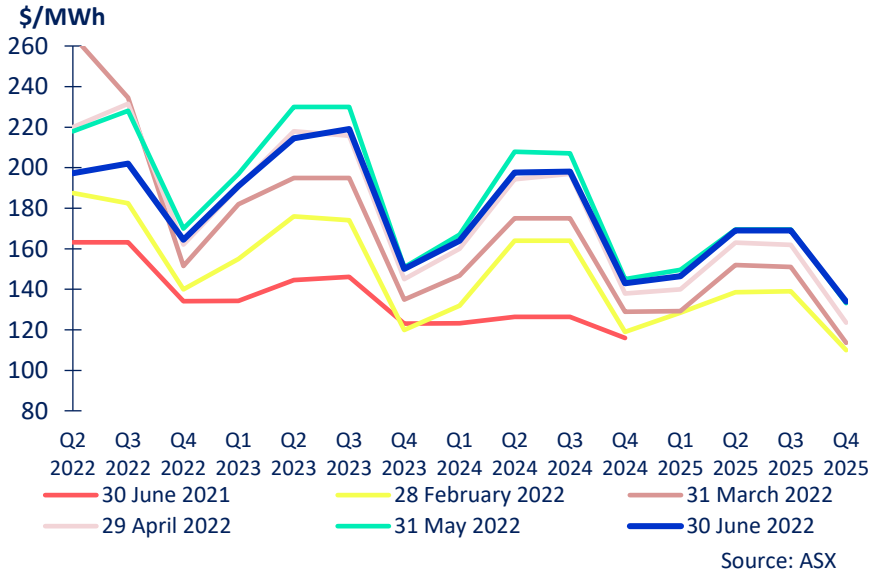
Market data

- June 2022 saw decreases in ASX prices
- National storage increased from 85% of average on 10 June 2022 to 94% of average on 14 July 2022
- South Island storage increased to 84% of historical average by 14 July 2022. North Island storage increased to 146% of average

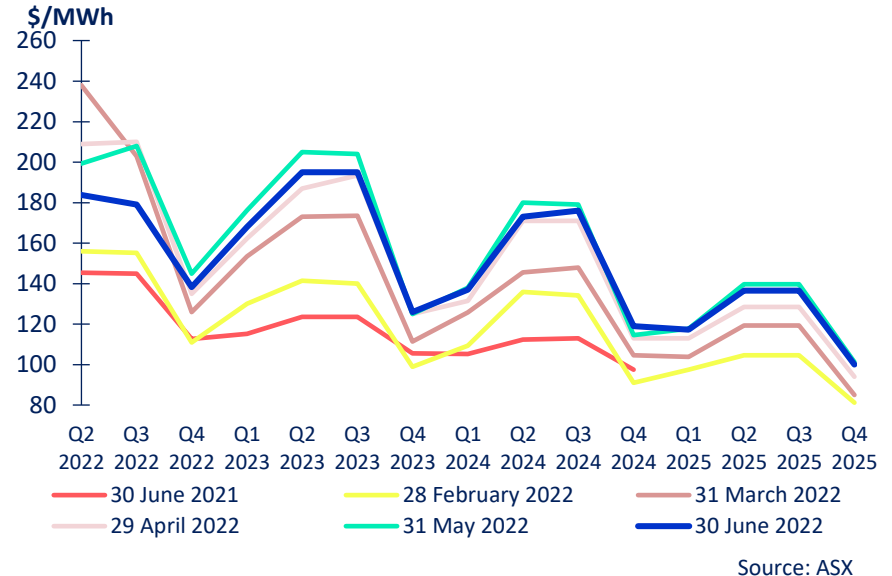
NATIONAL HYDRO STORAGE (14 July 2022)



OTAHUHU ASX FUTURES SETTLEMENT PRICE



BENMORE ASX FUTURES SETTLEMENT PRICE

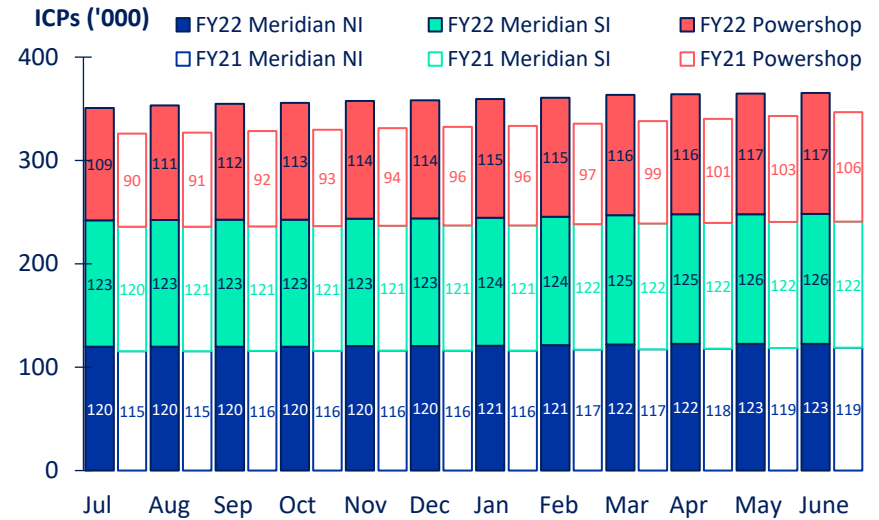


New Zealand retail

- Meridian’s New Zealand customer connection numbers rose 0.1% during June 2022 and have risen 5.3% since June 2021
- Retail sales volumes in June 2022 were 6.5% higher than June 2021
- Compared to June 2021, segment sales increased in residential +6.2%, small medium business +6.5%, agricultural +9.9%, large business +13.4% and corporate +5.2%
- To date this financial year, retail sales volumes are 6.4% higher than the same period last year
- This reflects increased segment sales in: residential +10.5%, small medium business +16.8%, and corporate +9.6%. Agricultural volumes are -13.3% lower and large business volumes are -1.8% lower

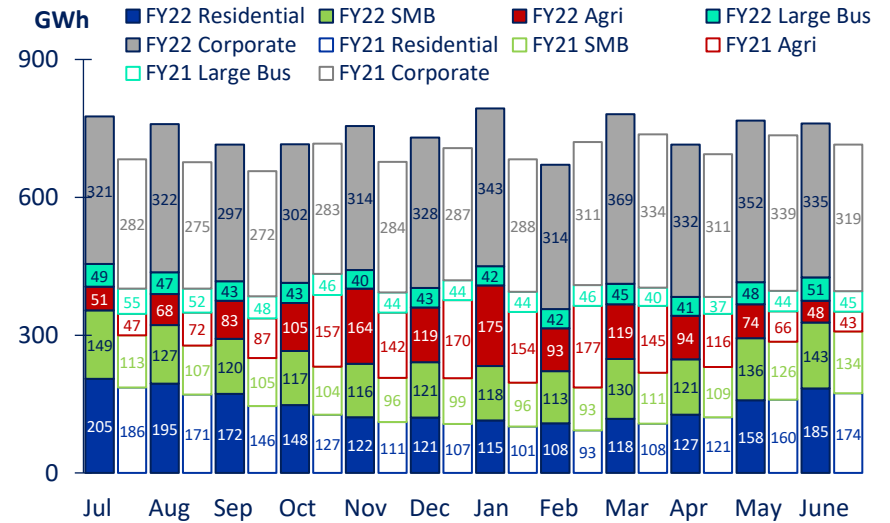
*excludes volumes sold to New Zealand Aluminium Smelters and CFDs

MERIDIAN'S NZ CUSTOMER CONNECTIONS



Source: Meridian

MERIDIAN'S RETAIL SALES VOLUME*

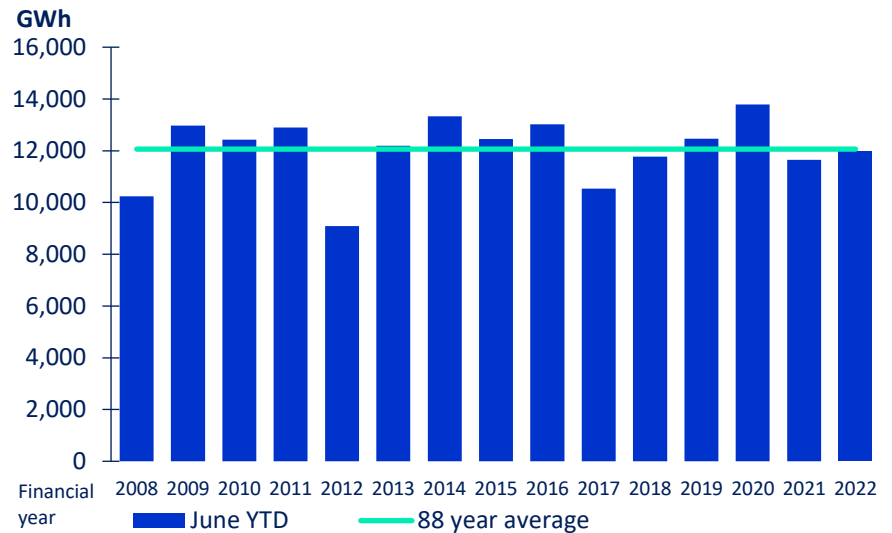


Source: Meridian

New Zealand storage

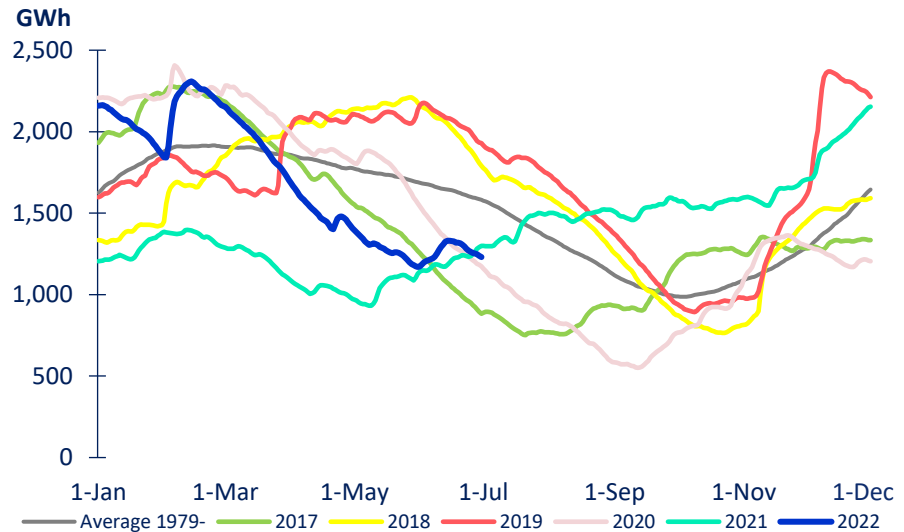
- June 2022 monthly inflows were 144% of historical average
- To date this financial year, inflows are 99% of historical average
- Meridian’s Waitaki catchment water storage moved from 1,170GWh to 1,230GWh during June 2022
- Waitaki water storage at the end of June 2022 was 78% of historical average and 5% lower than the same time last year
- Water storage in Meridian’s Waiau catchment was 119% of average at the end of June 2022

MERIDIAN'S COMBINED CATCHMENT INFLOWS



Source: Meridian

MERIDIAN'S WAITAKI STORAGE

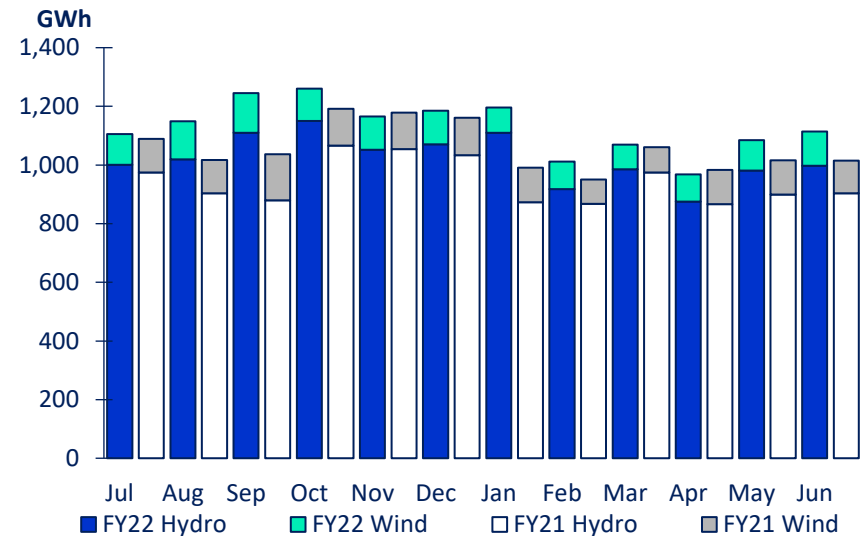


Source: Meridian

New Zealand generation

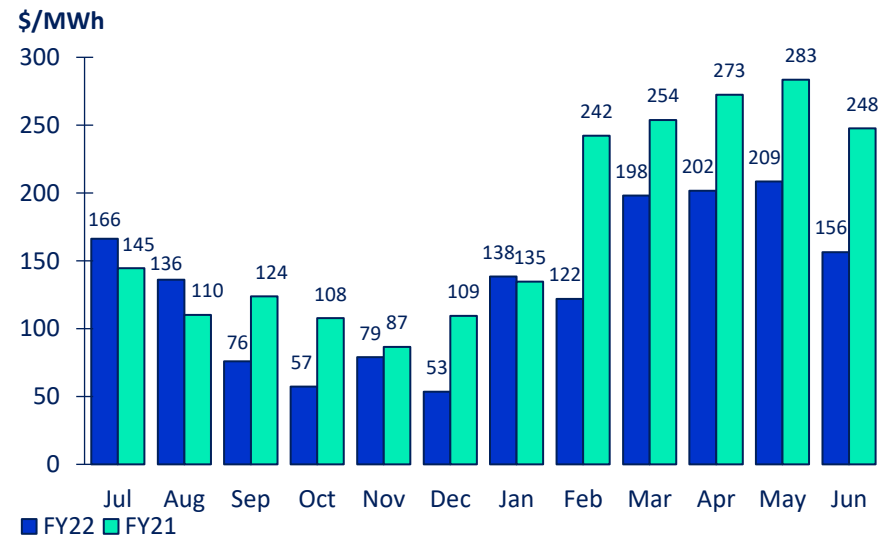
- Meridian's New Zealand generation in June 2022 was 9.8% higher than the same month last year, reflecting higher hydro and higher wind generation
- To date this financial year, Meridian's New Zealand generation is 6.8% higher than the same period last year, reflecting higher hydro and lower wind generation
- The average price Meridian received for its generation in June 2022 was 36.8% lower than the same month last year
- The average price Meridian paid to supply customers in June 2022 was 37.4% lower than the same month last year
- To date this financial year, the average price Meridian received for its generation is 25.0% lower than the same period last year and the average price paid to supply customers is 23.0% lower

MERIDIAN'S NEW ZEALAND GENERATION



Source: Meridian

MERIDIAN'S AVERAGE GENERATION PRICE*



*price received for Meridian's physical generation

Source: Meridian

New Zealand

	JUNE 2022 MONTH	JUNE 2021 MONTH	MAY 2022 MONTH	APRIL 2022 MONTH	12 MONTHS TO JUNE 2022	12 MONTHS TO JUNE 2021
New Zealand contracted sales						
Residential sales volume (GWh)	185	174	158	127	1,774	1,605
Small medium business sales volume (GWh)	143	134	136	121	1,511	1,294
Agricultural sales volume (GWh)	48	43	74	94	1,193	1,376
Large business sales volume (GWh)	51	45	48	41	534	544
Corporate and industrial sales volume (GWh)	335	319	352	332	3,929	3,586
Retail contracted sales volume (GWh)	761	715	768	715	8,941	8,405
Average retail contracted sales price ¹ (\$NZ/MWh)	\$127.0	\$118.9	\$128.5	\$122.8	\$118.1	\$112.3
NZAS sales volume (GWh)	412	412	418	402	4,992	5,011
Financial contract sales volumes ² (GWh)	219	129	203	178	2,963	1,906
Average wholesale & financial contracts sales price ³ (\$NZ/MWh)	\$66.9	\$74.1	\$74.9	\$68.1	\$66.3	\$70.7
Retail customer supply volumes (GWh)	814	753	815	747	9,433	8,828
Cost to supply retail customers (\$NZ/MWh)	\$168.0	\$272.2	\$221.5	\$210.5	\$149.1	\$193.0
Cost to supply wholesale customers (\$NZ/MWh)	\$152.1	\$242.5	\$215.0	\$225.2	\$133.2	\$173.5
Cost of financial contracts (\$NZ/MWh)	\$157.1	\$228.2	\$207.7	\$219.0	\$132.2	\$169.6
Total New Zealand customer connections ⁴	365,346	346,830	364,839	364,182		

See page 11 for footnotes

New Zealand

	JUNE 2022 MONTH	JUNE 2021 MONTH	MAY 2022 MONTH	APRIL 2022 MONTH	12 MONTHS TO JUNE 2022	12 MONTHS TO JUNE 2021
New Zealand generation						
Hydro generation volume (GWh)	998	903	982	876	12,271	11,297
Wind generation volume (GWh)	116	111	104	93	1,285	1,395
Total generation volume (GWh)	1,114	1,015	1,085	968	13,557	12,692
Average generation price ⁵ (\$NZ/MWh)	\$156.4	\$247.5	\$208.5	\$201.5	\$129.7	\$172.9
New Zealand hedging						
Hedging volume ⁶ (GWh)	324	360	353	438	4,376	3,883
Hedging cost average price (\$NZ/MWh)	\$136.7	\$119.0	\$134.6	\$127.8	\$117.6	\$108.4
Hedging spot revenue average price (\$NZ/MWh)	\$161.2	\$237.6	\$217.2	\$197.5	\$149.3	\$181.7
Future contract close outs (\$NZm)	\$10.9	\$9.7	\$2.3	-\$6.4	\$8.8	-\$13.7

See page 11 for footnotes

New Zealand

	JUNE 2022 MONTH	JUNE 2021 MONTH	MAY 2022 MONTH	APRIL 2022 MONTH	12 MONTHS TO JUNE 2022	12 MONTHS TO JUNE 2021
New Zealand costs						
Employee and Operating Costs ⁷ (\$m)	25	27	21	19	216	209
Stay in Business Capital Expenditure (\$m)	6	4	3	3	40	38
Investment Capital Expenditure (\$m)	9	3	13	19	135	64
Total Capital Expenditure (\$m)	15	7	16	22	175	102

Following the Court of Appeal decision in the Metro Glass case, a \$6.8m provision in relation to holiday pay has been released, reducing FY22 YTD operating costs.

Footnotes

- Contracted sales volumes and volume weighted average price received from contracted customers less distribution costs
- Derivatives sold excluding the sell-side of virtual asset swaps
- Average price of both NZAS sales volume and derivative sales volumes
- Meridian Retail and Powershop New Zealand installation control points (ICPs), excluding vacants
- Volume weighted average price received for Meridian's physical generation
- Over the counter and ASX contract volumes excluding the buy-side of virtual asset swaps
- Excludes electricity metering expenses, now reclassified into gross margin

FY22 operating information

	Jul 2021	Aug 2021	Sep 2021	Oct 2021	Nov 2021	Dec 2021	Jan 2022	Feb 2022	Mar 2022	Apr 2022	May 2022	Jun 2022	Q1 FY22	YoY change	Q2 FY22	YoY change	Q3 FY22	YoY change	Q4 FY22	YoY change
New Zealand contracted sales																				
Residential sales volume (GWh)	205	195	172	148	122	121	115	108	118	127	158	185	572	+70	391	+45	341	+39	470	+15
Small medium business sales volume (GWh)	149	127	120	117	116	121	118	113	130	121	136	143	396	+71	354	+55	362	+62	399	+30
Agricultural sales volume (GWh)	51	68	83	105	164	119	175	93	119	94	74	48	202	-3	387	-81	388	-88	216	-10
Large business sales volume (GWh)	49	47	43	43	40	43	42	42	45	41	48	51	140	-16	126	-7	128	-1	140	+14
Corporate and industrial sales volume (GWh)	321	322	297	302	314	328	343	314	369	332	352	335	940	+111	943	+88	1,026	+93	1,019	+51
Retail contracted sales volume (GWh)	776	759	715	716	755	731	793	671	781	715	768	761	2,250	+233	2,202	+99	2,246	+105	2,244	+99
Average retail contracted sales price (\$NZ/MWh)	\$122.6	\$124.0	\$123.2	\$109.9	\$109.8	\$105.2	\$111.2	\$115.5	\$116.6	\$122.8	\$128.5	\$127.0	\$123.2	+\$4.0	\$108.3	+\$3.8	\$114.4	+\$7.6	\$126.2	+\$7.2
NZAS sales volume (GWh)	426	426	411	426	412	426	426	384	426	402	418	412	1,262	+0	1,263	+0	1,236	+0	1,232	-18
Financial contract sales volumes (GWh)	197	297	234	374	280	208	280	244	249	178	203	219	728	+214	862	+376	773	+306	600	+161
Average wholesale & financial contracts sales price (\$NZ/MWh)	\$73.2	\$78.4	\$65.1	\$62.3	\$56.9	\$59.8	\$63.3	\$63.7	\$64.2	\$68.1	\$74.9	\$66.9	\$72.5	-\$3.3	\$59.8	-\$8.9	\$63.7	+\$0.9	\$70.0	-\$5.4
Retail customer supply volumes (GWh)	816	795	752	764	798	776	828	709	821	747	815	814	2,363	+246	2,337	+123	2,358	+114	2,376	+123
Cost to supply retail customers (\$NZ/MWh)	\$190.3	\$165.3	\$91.0	\$74.6	\$92.7	\$57.2	\$148.4	\$146.4	\$213.2	\$210.5	\$221.5	\$168.0	\$150.3	+\$8.4	\$75.0	-\$40.8	\$170.4	-\$53.1	\$199.7	-\$87.0
Cost to supply wholesale customers (\$NZ/MWh)	\$162.7	\$115.9	\$62.6	\$51.2	\$76.5	\$45.5	\$156.9	\$120.5	\$216.0	\$225.2	\$215.0	\$152.1	\$114.3	-\$10.9	\$57.5	-\$36.4	\$165.9	-\$45.6	\$197.3	-\$67.6
Cost of financial contracts (\$NZ/MWh)	\$159.9	\$137.5	\$104.8	\$66.0	\$78.8	\$68.2	\$160.4	\$117.0	\$180.6	\$219.0	\$207.7	\$157.1	\$133.0	+\$2.9	\$70.7	-\$34.0	\$153.2	-\$39.3	\$192.6	-\$70.9
Total New Zealand customer connections	350,961	353,357	354,810	355,760	357,521	358,350	359,550	360,780	363,430	364,182	364,839	365,346	354,810	+26,208	358,350	+25,763	363,430	+25,379	365,346	+18,516
New Zealand generation																				
Hydro generation volume (GWh)	1,000	1,020	1,110	1,150	1,052	1,071	1,110	918	986	876	982	998	3,130	+372	3,273	+119	3,014	+298	2,855	+185
Wind generation volume (GWh)	105	129	135	111	114	114	86	94	84	93	104	116	370	-16	339	-40	264	-23	313	-31
Total generation volume (GWh)	1,105	1,149	1,245	1,260	1,166	1,185	1,196	1,012	1,070	968	1,085	1,114	3,499	+356	3,612	+79	3,278	+275	3,168	+154
Average generation price (\$NZ/MWh)	\$166.2	\$136.1	\$75.8	\$57.1	\$78.9	\$53.4	\$138.4	\$121.8	\$198.1	\$201.5	\$208.5	\$156.4	\$124.1	-\$2.3	\$63.0	-\$38.2	\$152.8	-\$58.0	\$188.0	-\$79.7
New Zealand hedging																				
Hedging volume (GWh)	394	325	255	327	332	346	404	421	459	438	353	324	975	+122	1,004	+141	1,283	+195	1,115	+35
Hedging cost average price (\$NZ/MWh)	\$129.6	\$121.5	\$117.7	\$93.6	\$94.8	\$109.3	\$104.1	\$117.0	\$120.0	\$127.8	\$134.6	\$136.7	\$123.8	+\$18.5	\$99.4	+\$5.2	\$114.0	-\$1.2	\$132.6	+\$17.2
Hedging spot revenue average price (\$NZ/MWh)	\$164.1	\$140.7	\$115.6	\$74.4	\$88.3	\$69.2	\$168.3	\$138.8	\$205.9	\$197.5	\$217.2	\$161.2	\$143.6	+\$13.4	\$77.2	-\$32.5	\$303.7	-\$55.1	\$193.2	-\$68.0
Future contract close outs (\$NZm)	-0.7	0.1	0.2	-0.9	0.2	-0.1	-5.1	-1.5	10.0	-6.4	2.3	10.9	-0.5	+5.9	-0.8	+2.8	3.3	+13.0	6.8	+0.8
Meridian Group																				
Employee and Operating Costs (\$NZ m)	16	17	18	18	20	8	15	18	21	19	21	25	51	+3	46	-3	54	+7	65	+1
Stay in Business Capital Expenditure (\$NZ m)	3	3	4	3	6	2	-1	4	4	3	3	6	10	+1	11	+2	6	-2	13	+1
Investment Capital Expenditure (\$NZ m)	9	4	23	11	17	6	9	8	6	19	13	9	36	+25	34	+28	23	-14	41	+31
Total Capital Expenditure (\$NZ m)	12	7	27	15	24	7	8	11	10	22	16	15	46	+26	46	+30	29	-16	54	+33

FY21 operating information

	Jul 2020	Aug 2020	Sep 2020	Oct 2020	Nov 2020	Dec 2020	Jan 2021	Feb 2021	Mar 2021	Apr 2021	May 2021	Jun 2021	Q1 FY21	YoY change	Q2 FY21	YoY change	Q3 FY21	YoY change	Q4 FY21	YoY change
New Zealand contracted sales																				
Residential sales volume (GWh)	186	171	146	127	111	107	101	93	108	121	160	174	503	+31	345	+16	302	+2	455	+9
Small medium business sales volume (GWh)	113	107	105	104	96	99	96	93	111	109	126	134	325	+34	299	+44	300	+39	369	+130
Agricultural sales volume (GWh)	47	72	87	157	142	170	154	177	145	116	66	43	205	+22	469	+60	476	-18	226	+46
Large business sales volume (GWh)	55	52	48	46	44	44	44	46	40	37	44	45	155	+26	134	+14	130	+12	126	+7
Corporate and industrial sales volume (GWh)	282	275	272	283	284	287	288	311	334	311	339	319	829	+93	855	+117	933	+127	968	+215
Retail contracted sales volume (GWh)	683	677	657	717	678	707	683	721	738	694	736	715	2,017	+206	2,102	+252	2,141	+163	2,144	+408
Average retail contracted sales price (\$NZ/MWh)	\$120.4	\$119.3	\$118.1	\$106.0	\$103.1	\$104.2	\$104.1	\$108.7	\$107.5	\$114.7	\$123.2	\$118.9	\$119.3	+\$6.3	\$104.5	+\$3.6	\$106.8	-\$0.1	\$119.0	+\$8.0
NZAS sales volume (GWh)	426	426	411	426	412	426	426	384	426	412	426	412	1,262	-110	1,263	-110	1,236	-123	1,250	-77
Financial contract sales volumes (GWh)	188	125	201	126	221	140	144	126	197	167	143	129	514	+40	487	+59	467	-339	439	-380
Average wholesale & financial contracts sales price (\$NZ/MWh)	\$82.0	\$70.4	\$74.2	\$69.4	\$69.9	\$66.8	\$59.6	\$58.0	\$69.8	\$76.8	\$75.2	\$74.1	\$75.7	+\$6.0	\$68.7	+\$3.9	\$62.9	-\$4.4	\$75.4	+\$9.8
Retail customer supply volumes (GWh)	704	717	696	755	717	743	719	757	768	718	782	753	2,117	+229	2,215	+274	2,244	+163	2,253	+432
Cost to supply retail customers (\$NZ/MWh)	\$165.1	\$120.6	\$140.3	\$126.9	\$101.0	\$118.8	\$143.9	\$256.7	\$265.1	\$285.5	\$301.9	\$272.2	\$141.9	+\$16.8	\$115.8	+\$16.6	\$223.4	+\$146.1	\$286.7	+\$178.7
Cost to supply wholesale customers (\$NZ/MWh)	\$143.8	\$109.6	\$122.2	\$95.8	\$76.3	\$109.2	\$132.6	\$244.8	\$260.3	\$277.8	\$274.2	\$242.5	\$125.2	+\$10.5	\$94.0	+\$9.5	\$211.5	+\$158.5	\$264.9	+\$162.2
Cost of financial contracts (\$NZ/MWh)	\$143.7	\$113.1	\$127.8	\$110.8	\$92.3	\$119.1	\$139.1	\$234.0	\$204.8	\$266.4	\$291.8	\$228.2	\$130.0	+\$16.3	\$104.7	+\$10.2	\$192.5	+\$137.7	\$263.5	+\$166.4
Total New Zealand customer connections	326,148	327,125	328,602	329,710	331,240	332,587	333,367	335,580	338,051	340,178	343,015	346,830	328,602	+19,230	332,587	+18,988	338,051	+18,273	346,830	+22,577
New Zealand generation																				
Hydro generation volume (GWh)	975	904	879	1,066	1,054	1,034	874	868	974	867	900	903	2,758	-474	3,153	-22	2,716	-542	2,670	-423
Wind generation volume (GWh)	115	113	158	126	125	128	117	83	87	116	116	111	385	+8	379	-22	287	-52	344	-4
Total generation volume (GWh)	1,089	1,017	1,037	1,192	1,179	1,162	991	951	1,061	983	1,016	1,015	3,144	-466	3,533	-44	3,003	-593	3,014	-427
Average generation price (\$NZ/MWh)	\$144.5	\$110.1	\$123.7	\$107.7	\$86.5	\$109.3	\$134.5	\$242.1	\$253.8	\$272.5	\$283.4	\$247.5	\$126.5	+\$11.5	\$101.2	+\$13.8	\$210.7	+\$153.0	\$267.8	+\$171.5
New Zealand hedging																				
Hedging volume (GWh)	318	266	268	241	314	308	312	345	431	348	372	360	852	+436	863	+389	1,088	+23	1,079	+305
Hedging cost average price (\$NZ/MWh)	\$109.3	\$104.6	\$101.2	\$96.2	\$93.6	\$93.2	\$98.5	\$115.6	\$127.0	\$110.3	\$116.7	\$119.0	\$105.3	+\$41.8	\$94.2	+\$28.9	\$115.2	+\$13.5	\$115.4	+\$35.9
Hedging spot revenue average price (\$NZ/MWh)	\$133.4	\$123.8	\$132.6	\$114.4	\$94.0	\$121.9	\$136.8	\$235.0	\$219.0	\$260.2	\$285.0	\$237.6	\$130.2	+\$10.9	\$109.7	+\$15.6	\$358.8	+\$282.9	\$261.2	+\$161.3
Future contract close outs (\$NZm)	-1.6	-1.9	-2.9	0.6	-2.9	-1.3	-1.5	-4.5	-3.6	-1.6	-2.1	9.7	-6.4	-4.2	-3.7	-1.1	-9.7	-9.1	\$6.0	\$14.6
Meridian Group																				
Employee and Operating Costs (\$NZ m)	16	15	17	16	17	17	14	17	17	18	19	27	48	-17	50	-12	47	-15	64	-6
Stay in Business Capital Expenditure (\$NZ m)	2	3	4	4	3	3	3	2	3	4	3	4	9	-2	9	-3	8	-2	11	-1
Investment Capital Expenditure (\$NZ m)	6	2	2	2	2	3	1	2	34	3	4	3	11	+6	6	+2	37	+32	10	+5
Total Capital Expenditure (\$NZ m)	9	6	6	5	4	6	4	5	37	7	7	7	20	+4	15	-1	46	+31	21	+4

Glossary

Hedging volumes	buy-side electricity derivatives excluding the buy-side of virtual asset swaps
Average generation price	the volume weighted average price received for Meridian’s physical generation
Average retail contracted sales price	volume weighted average electricity price received from retail customers, less distribution costs
Average wholesale contracted sales price	volume weighted average electricity price received from wholesale customers (including NZAS) and financial contracts
Combined catchment inflows	combined water inflows into Meridian’s Waitaki and Waiau hydro storage lakes
Cost of hedges	volume weighted average price Meridian pays for derivatives acquired
Cost to supply contracted sales	volume weighted average price Meridian pays to supply contracted customer sales and financial contracts
Contracts for Difference (CFDs)	an agreement between parties to pay the difference between the wholesale electricity price and an agreed fixed price for a specified volume of electricity. CFDs do not result in the physical supply of electricity
Customer connections (NZ)	number of installation control points, excluding vacants
GWh	gigawatt hour. Enough electricity for 125 average New Zealand households for one year
Historic average inflows	the historic average combined water inflows into Meridian’s Waitaki and Waiau hydro storage lakes over the last 85 years
Historic average storage	the historic average level of storage in Meridian’s Waitaki catchment since 1979
HVDC	high voltage direct current link between the North and South Islands of New Zealand
ICP	New Zealand installation control points, excluding vacants
ICP switching	the number of installation control points changing retailer supplier in New Zealand, recorded in the month the switch was initiated
MWh	megawatt hour. Enough electricity for one average New Zealand household for 46 days
National demand	Electricity Authority’s reconciled grid demand www.emi.ea.govt.nz
NZAS	New Zealand Aluminium Smelters Limited
Retail sales volumes	contract sales volumes to retail customers, including both non half hourly and half hourly metered customers
Financial contract sales	sell-side electricity derivatives excluding the sell-side of virtual asset swaps
Virtual Asset Swaps (VAS)	CFDs Meridian has with Genesis Energy and Mercury New Zealand. They do not result in the physical supply of electricity